



On March 16, 1846, sections of Holliston, Hopkinton and Sherborn known as Unionville incorporated into the town of Ashland. Its prime location in a small valley on the Sudbury River attracted energetic and enterprising residents who built municipal buildings, schools, churches and businesses. Ashland's enterprises included shoe and boot factories, general stores, paper mills, orchards and farms.

The 2008 Ashland Historical Walk celebrates the rich and exciting history of Ashland. The guided tour offers an opportunity to hear stories of residents who have come before us and to see historic treasures that might otherwise be missed during a quick drive through town.

An underlying message is that several antique buildings featured on today's walk are slated for demolition. With town support, it's possible that these irreplaceable gems may be saved for future generations.

Your interest in Ashland's fascinating history is much appreciated.



Ashland Centre photographed looking south on Main Street toward Union Street, 1915.

The Ashland Historic Commission and the Ashland Open Space Committee would like to thank the residents and town employees who volunteered their time, energy and expertise to make The 2008 Ashland Historical Walk a reality. Special thanks to the Ashland Historical Society for the use of Ocean House.

If you would like to learn more about the Ashland Historical Society, please stop by the Ocean House on Wednesday evenings or call (508) 881-8183. Membership dues are only \$10 per year. Benefits of membership include a monthly newsletter, entrance to all scheduled events and the camaraderie of other history lovers.

Photography: Ashland Historical Society and James Tsakirgis

ASHLAND
HISTORIC COMMISSION

Ashland Town Hall
101 Main Street, Ashland, MA 01721



Ashland Open Space Committee
Ashland Town Hall
101 Main Street, Ashland, MA 01721
www.Ashlandopenspace.org

ASHLAND
HISTORICAL WALK
OCTOBER 2008



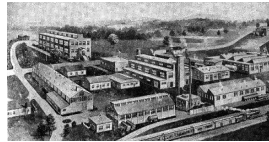
Ashland Historical Society's Ocean House
built circa 1748

Co-sponsored by the Ashland Historic Commission and the Ashland Open Space Committee, with assistance from the Ashland Historical Society

1. Ocean House (1748). Colonel John Jones, Jr. once operated a grist mill adjacent to this salt-box style house which today houses the Ashland Historical Society.



2. Chemical Brook. Once colored by toxic waste from dye manufacturing, the brook now runs clear.



3. Nyanza Cap. Textile dyes manufactured from 1917 to 1978 resulted in large amounts of toxic waste. An EPA Superfund site, the area is now capped, containing the contaminants.

4. Valentine Estate (circa 1800). Built by Thomas Valentine, son of a prominent Boston family.



5. The Enslin Farm (1840). One of four historic farms located along West Union Street.



6. Old Revolutionary Burying Ground (circa 1800). Nine headstones and one tomb remain.



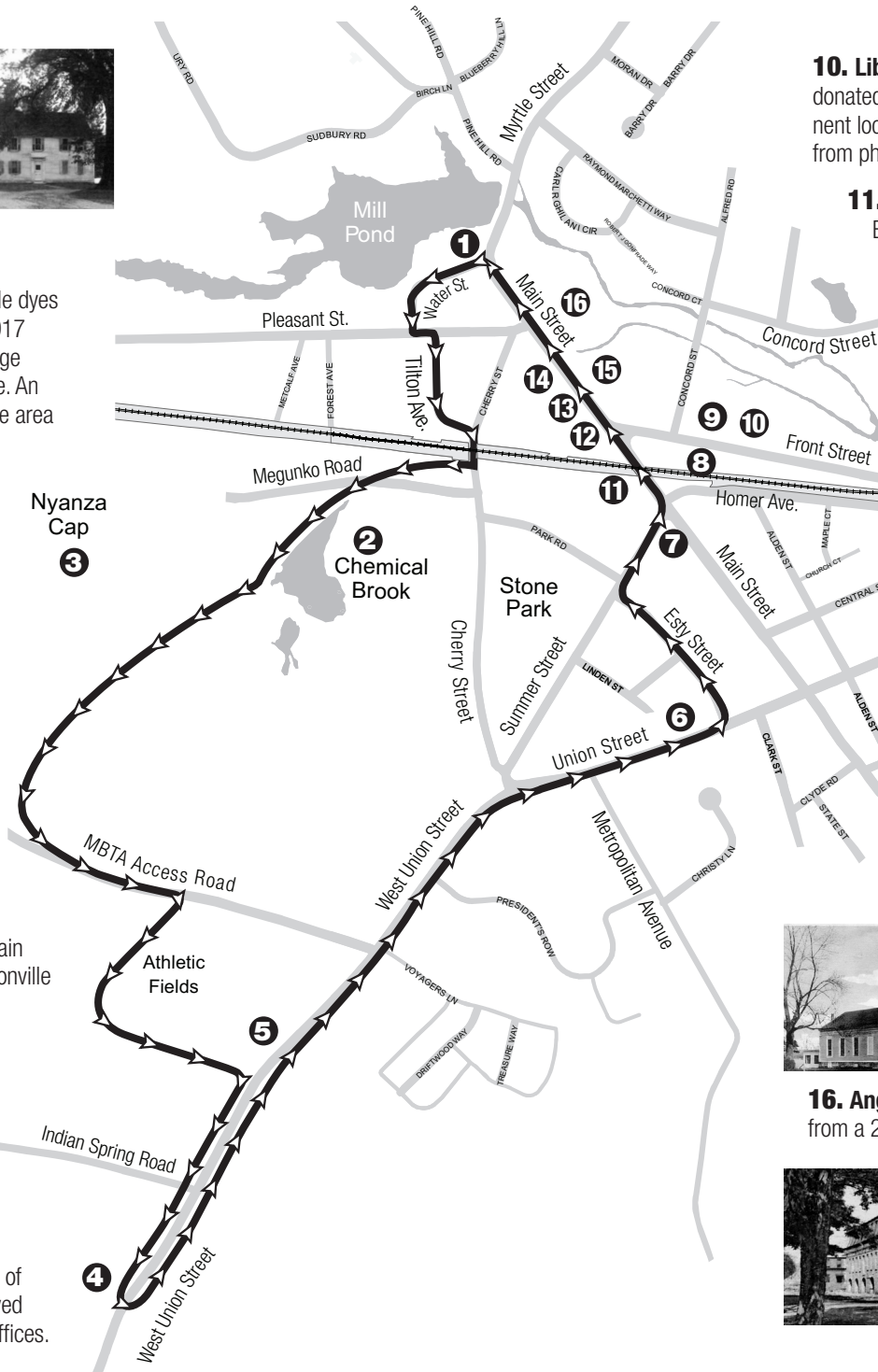
7. Post Office (1940). Site of a mural depicting the first train stopping at what was then Unionville on September 20, 1834.



8. Railroad Depot (1886). Typifies the signature Romanesque style of its architect, Henry Hobson Richardson, who also designed Boston's Trinity Church in Copley Square.



9. Masonic Hall (1885). Meeting place of the fraternity of Masons, the hall has also served as home to retail stores and offices.



10. Library (1904). Built with land donated by Abner Greenwood, prominent local businessman, and \$10,000 from philanthropist Andrew Carnegie.



11. Ashland Hotel (1834). Built by a wealthy landowner, Captain John Stone, it is well known today for reports of supernatural sightings.



12. Fire Station (1928-29). Its three bays still serve the town of Ashland.

13. Jackson House (1740). Purchased in 1938 by James Jackson who proposed that Unionville be renamed after statesman Henry Clay's Kentucky estate "Ashland."



14. Town Hall (1855). In addition to municipal government, the Town Hall has housed prisoners, classrooms, plays, dances, political debates and fairs. Original cost: \$9,984.34.



15. Congregational Church (1836). In order to conserve coal during WWI, Congregationalists, Methodists and Baptists consolidated here to form the Federated Church.

16. Angier Mills (1869-1872). Constructed of granite cut from a 24-acre quarry between Winter and Myrtle Streets.

